






**COMPANION OF WOMEN**  
**&**  
**CHILDREN EMPOWERMENT**  
**(COWOCE)**

-  P.O. Box 67, SHINYANGA - TANZANIA; MOBILE:
-  0754 245 206
-  [companion.org@yahoo.com](mailto:companion.org@yahoo.com)



## INTRODUCTION AND BACKGROUND

Companion of Women and Children Empowerment (COWOCE) is a Non- partisan, Non-Religious and Non - profit Organization geared at Promoting human rights and Community Development based at Shinyanga region in Tanzania. it was registered as an NGO on 21th August, 2018 and was issued with the Reg. 00NGO/00009869 under the NGOs Act of 2002, section 12 (2) Tanzania Laws No 24.

### THE ORGANIZATION WORKING ON DIFFERENT ISSUES SUCH AS:-

- Enhanced Right and access to justice among women, children and People with disabilities
- Ensure economic and social empowerment to women and youth through training and advocacy
- Promote quality education to children and youth
- Enhance prevention of behavior, cultural issues and attitude

However, COWOCE implement community based Health Education and promotion programs aiming at building capacity of youth, individuals and community members in health and economic development.

### MISSION OF THE ORGANIZATION:

“To empower Women, Children and the community with the right tools that help them to fight diseases, ignorance, poverty and all forms of discrimination through education, empowerment and participation

### VISION

“To see a community where women, children and elders who are empowered, environment are protected, healthy with stable economy”



COWOCE is managed by a Board of Governance, elected in General Assembly. The Board of Directors is composed by seven (7) Members. The Board gives direction to programs and ensures accountability and integrity to the Organization

## GOAL

The goal of **COWOCE** is to ensure community in Tanzania (Women, Youth, Children, People with Disability) LGA officials and leaders with information. And capacity to challenges and take relevant measure to reduce the impact through community mobilization, capacity building, advocacy & strengthening of people at the grass root level.

## STRATEGY

A sustainable strategy is devised to achieve the maximum, a need based and right based approach initiated ascertains the problem with fully community involvement and mobilizing all indigenous and local resources. The program goal is materialized with a helping hand from donor agencies, and Philanthropists.

## OVERALL OBJECTIVE

The overall development objective of Cowoce is enhanced ability in the target communities to tackle their own economic, social and environmental problems for sustainable community development.

1. To educate the deprived and under privilege common folk about the basic human rights and find basis to incorporate their efforts and mobilization to achieve maximum output
2. To build capacities of the communities in the identification and responding to environmental protection.
3. To create community awareness on the rights of People with Disabilities, women, elderly and children in partnership with other legal institutions.
4. To create community awareness on HIV/AIDs pandemic and how the community can prevent itself against new infection and support people living with HIV/AIDs.
5. To **EMPOWER THE COMMUNITY** so as to strengthen educational and vocational rehabilitation programs for attaining self- sustaining economies.
6. To empower and support Vulnerable Children access education and medical support
7. To implement community based Health Education and promotion programs aiming at building capacity of youth, individuals and community members in health and economic development.
8. Promote Gender equality



## THEMATIC PROGRAM / AREAS OF FOCUS



HEALTH



YOUTH  
EMPOWERMENT



EDUCATION



WOMEN  
EMPOWERMENT



PEOPLE'S WITH  
DISABILITY AND  
CHILDREN RIGHTS

## APPROACH

During the process of social mobilization, cowoce adopted a participatory, self-help, self-sustainable approach through community involvement and formation of volunteer groups in remote rural areas of Shinyanga and Tanzania in general.

## PHILOSOPHY

Sustainable rural development is a dynamic process posing various needs at different phases of time. These can be dealt with continuous interventions based on designed frameworks that incorporate the requirements projected by the communities and with the help of the communities by strategizing for partnership.



## SCOPE OF WORK

**COWOCE registered to operate activities in Tanzania mainland (Countrywide).**



## ORGANIZATIONAL VALUES

- ✓ Commitment
- ✓ Respect
- ✓ Transparency
- ✓ Accountability
- ✓ Integrity
- ✓ Innovation
- ✓ Team work
- ✓ Volunteerism
- ✓ Quality
- ✓ Environment Friendly
- ✓ Result Focus

## SERVICE DELIVERY:

**COWOCE** is staunch believer in a very strong and efficient service delivery in the fields of health, education and environment. For this purpose, **COWOCE** management has always delivered services in the communities in a transparent manner taking care of quantity and quality. It is only because of this very reason that the **COWOCE** interventions have always helped in meeting the community needs and achieving the desired objectives.

## NET WORKING:

**COWOCE** has always promoted the networking with other NGOs, CBOs, CSOs, media groups and concerned stakeholders for achieving the goal of sustainable development. Networking with other organizations has always proved very productive by playing as medium between the service providers and those at the receiving end. Networking basically provides opportunity for looking at the issues from different angles i.e. from local, national and finally at worldwide. At every level the perspective of issue changes, which then helps in comprehending the issue.

## TARGET GROUPS

**COWOCE** beneficiaries are poor and Marginal small scale farmers, Vulnerable, Women, Person with Disabilities, Children & youth and general public.

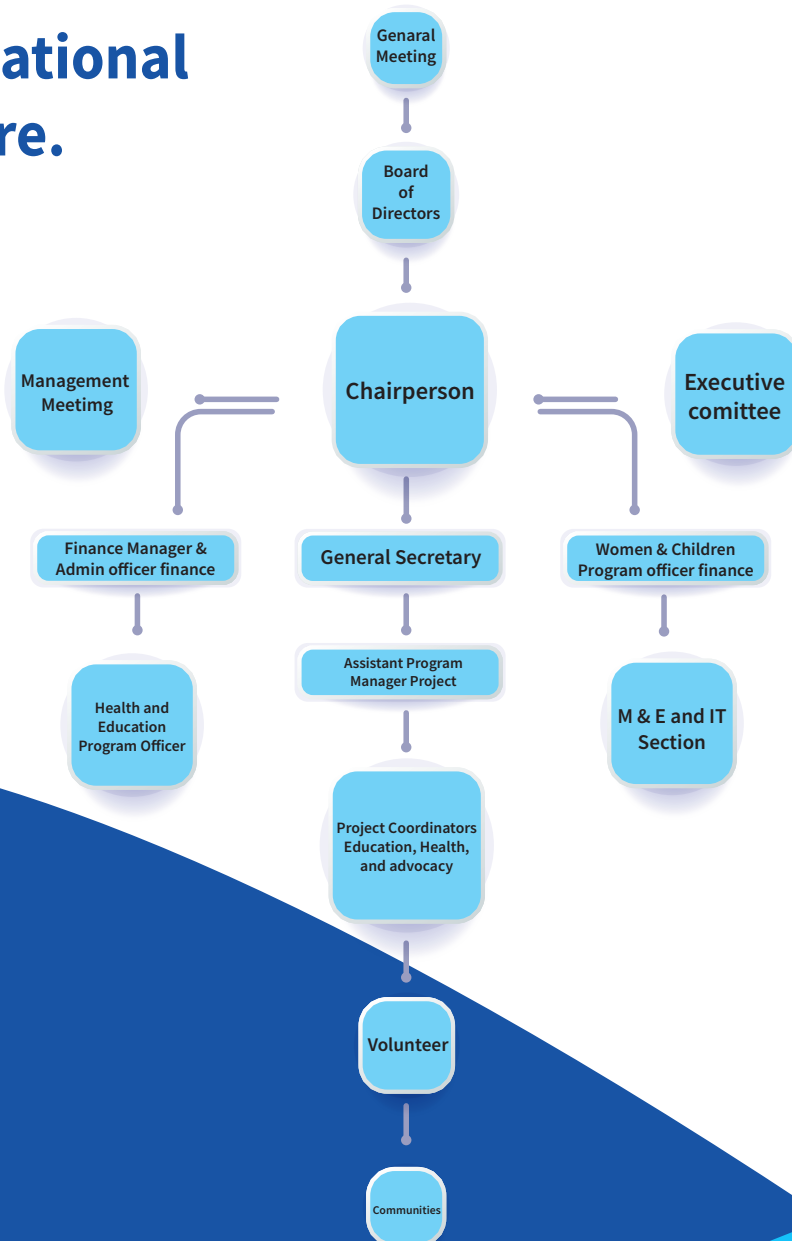
## CAPABILITY AND ACCOUNTABILITY

Beneficiaries of **COWOCE** shall possess the knowledge, understanding and capability to identify and resolve their problems. Staff of **COWOCE** shall facilitate process. The Management and Staff of **COWOCE** shall remain strict to their work plan and demonstrate accountability to the organization.

## CREATIVITY AND INNOVATION

In all cases the creativity and innovation will be appreciated in the whole project or program cycle. Creativity and innovative work the staff would be rewarded innovative and creative work would be replicated.

## Organizational Structure.



ACRONYM - **COWOCE**

FULL NAME - **COMPANION OF WOMEN AND CHILDREN EMPOWERMENT**

## LAW UNDER ORGANIZATION HAS REGISTERED

COWOCE is a Non-partisan, and Non-profit Organization geared at promoting human rights and Community Development.

Cowoce registered as an NGO and was issued with the Reg. 00NGO/00009869 under the NGOs Act of 2002, section 12 (2) Tanzania Laws No 24.

### BANK ACCOUNT DETAILS

ACCOUNT TITLE : Companion of Women and Children Empowerment (Cowoce)  
ACCOUNT NUMBER : 0250004932  
SWIFT CODE : EXTNTZTZ  
BRANCH : Shinyanga, Tanzania  
NAME OF BANK : Exiam Bank



[https://www.facebook.com/CowoceTanzania12?\\_rdc=1&\\_rdr](https://www.facebook.com/CowoceTanzania12?_rdc=1&_rdr)



<https://twitter.com/ccowoce>



<https://www.linkedin.com/in/cowoce-tanzania-412912185/>

### CONTACT DETAILS:



**JOSEPH M.NDATA LA**  
CHAIRPERSON OF COWOCE



**+255754245206**



**companion.org@yahoo.com**



**www.cowoce-tz.org**

